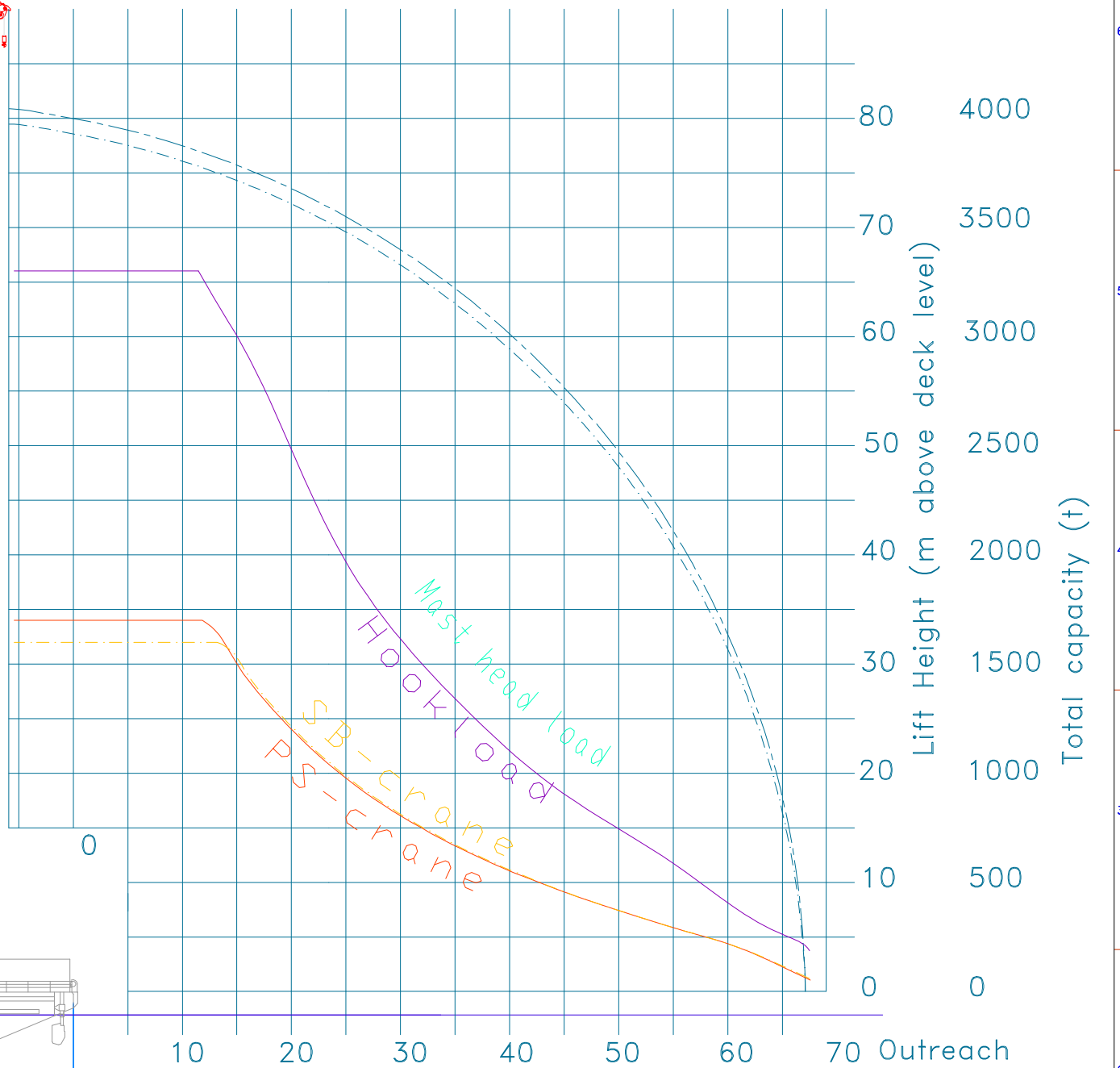
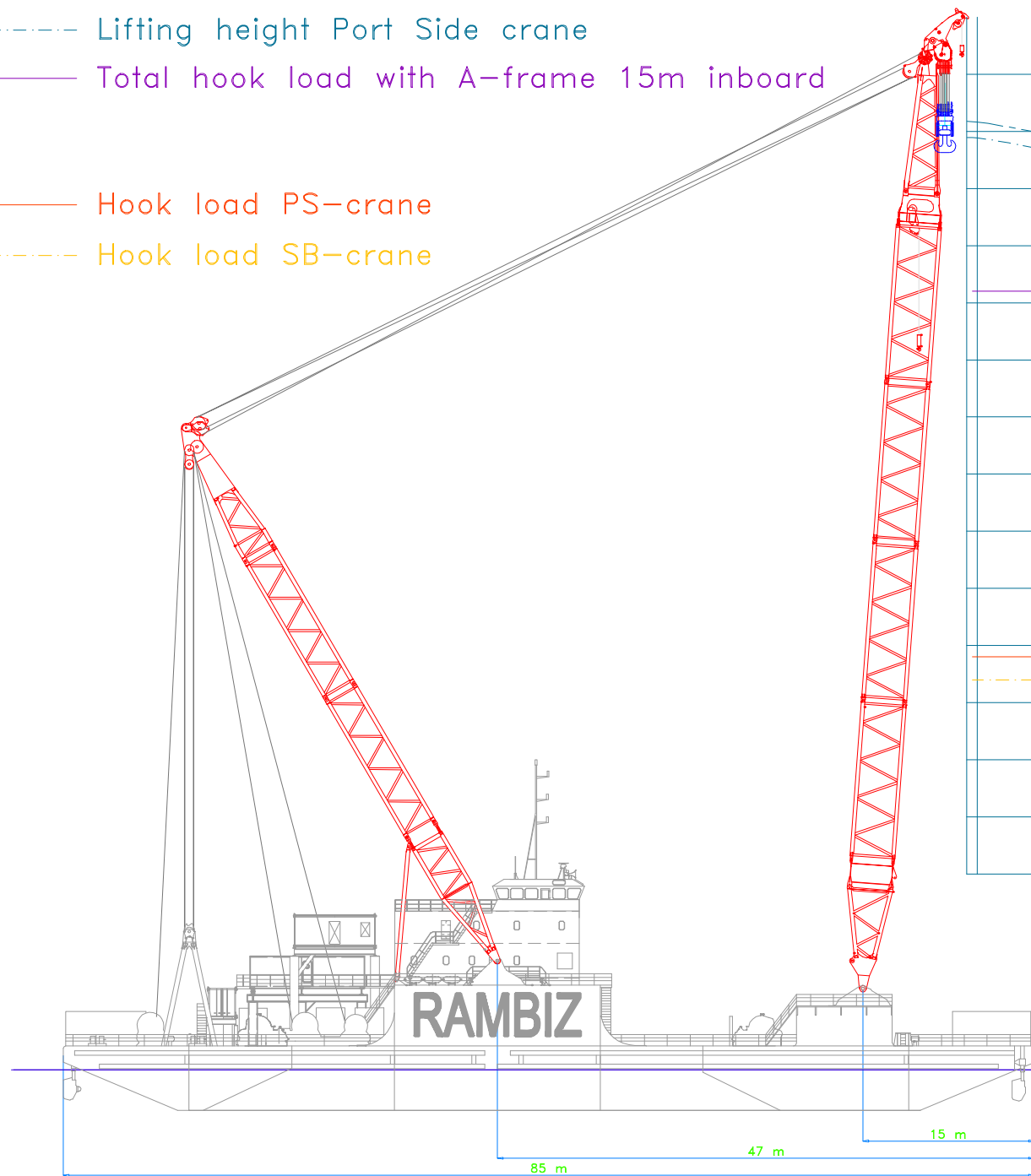


- Lifting height Starboard crane
- Lifting height Port Side crane
- Total hook load with A-frame 15m inboard
- Hook load PS-crane
- Hook load SB-crane

Loadcapacity curve for 82m mast



Characteristics

Length vessel : 85m
 Beam vessel : 44m
 Depth : 5.6 m
 Distance between crane booms at top : 34.1m
 Propulsion : 4 units 3000 HP total
 Sea state : Hsign = 0.75m
 Other sea states on request

Rev	Date	Description	Drawn	Checked	Approval	Clients Approval	Remarks
A	12/12/08	Rambiz loadcapacity curve	GMY	ADO	VDM		
Information				Format	Scale	Copy Date	
				A3	1:500	12/12/08	
Client				Copyright Reserved by law			
Scaldis-smc							
Project							
Rambiz							
Title							
Rambiz loadcapacity curve							
Document number		Drawing number		Revision			
				A			

