

SCALDIS

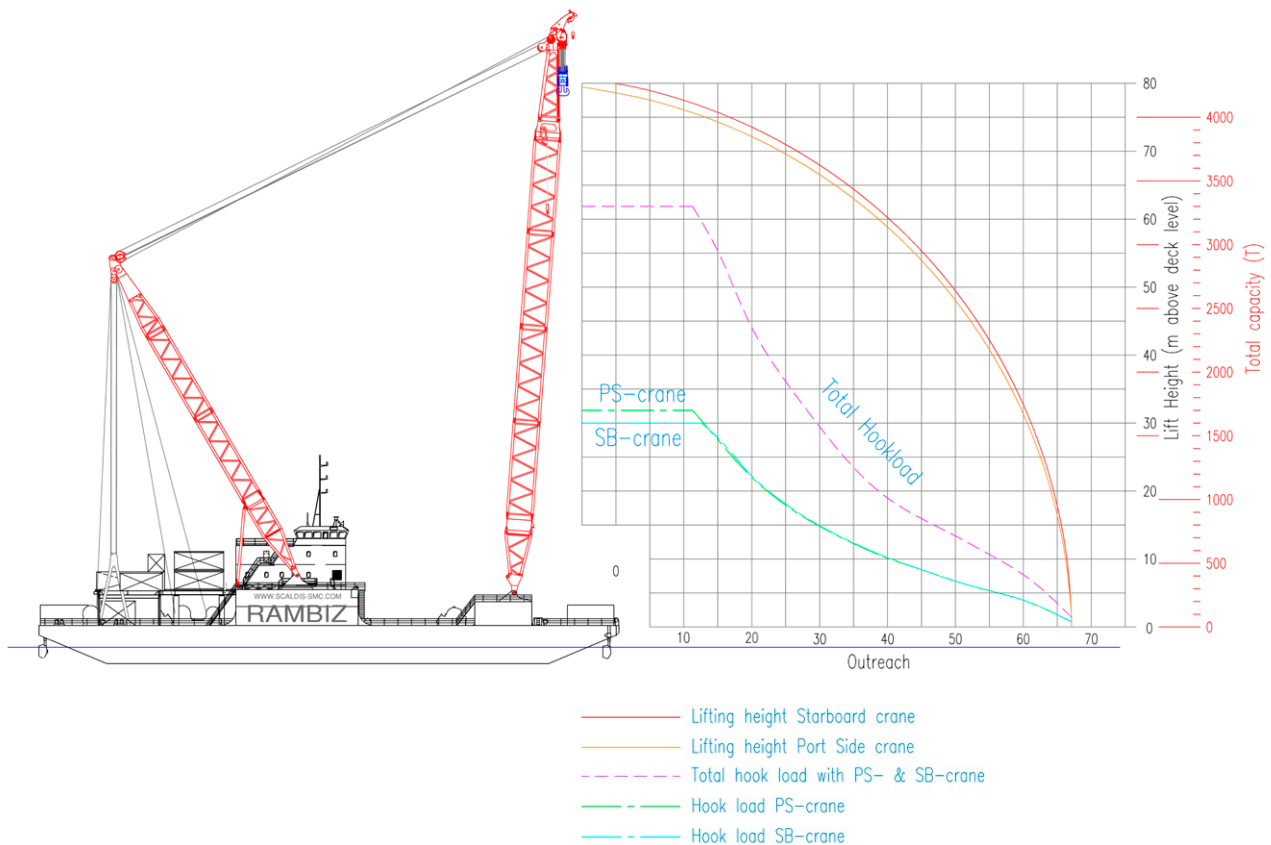
RAMBIZ



SCALDIS: LIFTING AT A HIGHER LEVEL

TECHNICAL INFORMATION

CHARACTERISTICS **HEAVY LIFT VESSEL RAMBIZ**



GENERAL PARTICULARS

Type of vessel	Heavy Lift Vessel
Year of conversion	1999 - 2000
Builders	Huisman-Iltrec / Schiedam
Class	Lloyd's Register of shipping
Class Notation	✱ 100AT non self-propelled crane pontoon, LA
Operators	SCALDIS-SMC NV
Flag	Belgian

LIFTING CAPACITY

Tandem lift	Max. 3,300t
Portside crane	Main hoist 1,700t Auxiliary hoist 2 x 15t
Starboard crane	Main hoist 1,600t Auxiliary hoist 2 x 15t
Max. lift height	78m above deck
Distance between crane booms	34.10m

MAIN DIMENSIONS

Length overall	85m
Breadth moulded	44m
Depth moulded	5.6m
Sailing draft	2.8m
Minimum operational draft	3.2m
Displacement	14,980t

POSITIONING

Type of propulsion	4 x Azimuth Thruster
Installed propulsion power	4 x 750 kW
Mooring winches	FWD: - 2x pcs mooring winches 80t - 1000m - Ø52mm AFT: - 3x pcs mooring winches 80t - 1000m - Ø58mm

TANK CAPACITY

Fuel oil	420m ³
Fresh water	400m ³ + watermaker (10m ³ /day)
Water ballast	14,675m ³

ACCOMMODATION

Max. persons	75 persons
V-SAT internet and voip phone facilities	